

Tigorex

UPDATED CATALOGUE

ANGLO-EAST TRADING CO. (HK) LTD

ROOM 906, BLOCK B, PO LUNG CENTRE, 11 WANG CHIU ROAD,
KOWLOON BAY, KOWLOON, HONG KONG

英東貿易(香港)有限公司

香港九龍九龍灣 宏照道11號 寶隆中心 8座 906室

TEL: (852) 2375 1111 FAX: (852) 2375 3409
E-MAIL: SALES@ANGLO-EAST.HK

CONTACT US

Tigorex



Tigorex Hospitality Company Limited
Room C 06, 5/F Mai Wah Ind Bldg,
No. 1-7 Wah Sing ST, Kwai Chung, Hong Kong
Website: www.tigorex.com
Email: dannychan@tigorex.com



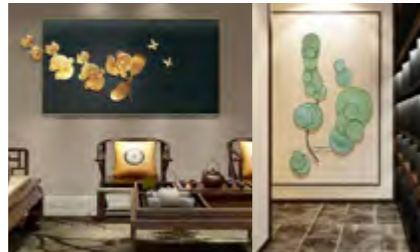
Tigorex



Tigorex

CONTENTS

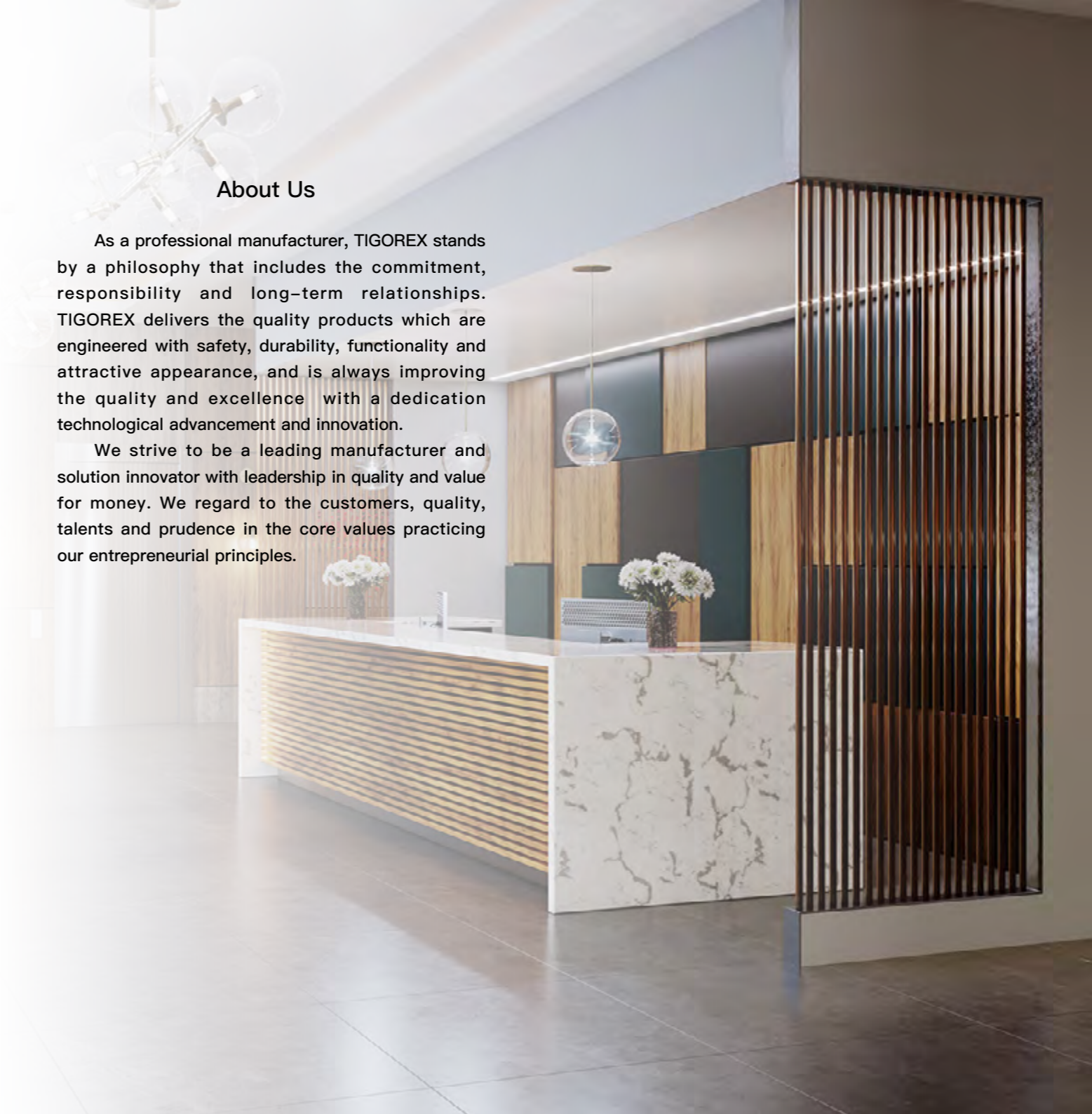
- 1. Guest Room Safe Box
- 2. Guest Room Minibar
- 3. Poly Resin Lacquerware
- 4. Leather Amenities
- 5. Capsule Coffee Machine
- 6. Electric Kettle
- 7. Hair Dryer
- 8. Flashlight
- 9. Automatic Sanitizer Dispenser
- 10. Art Decorative Painting
- 11. Chinese Tea Capsule Machine



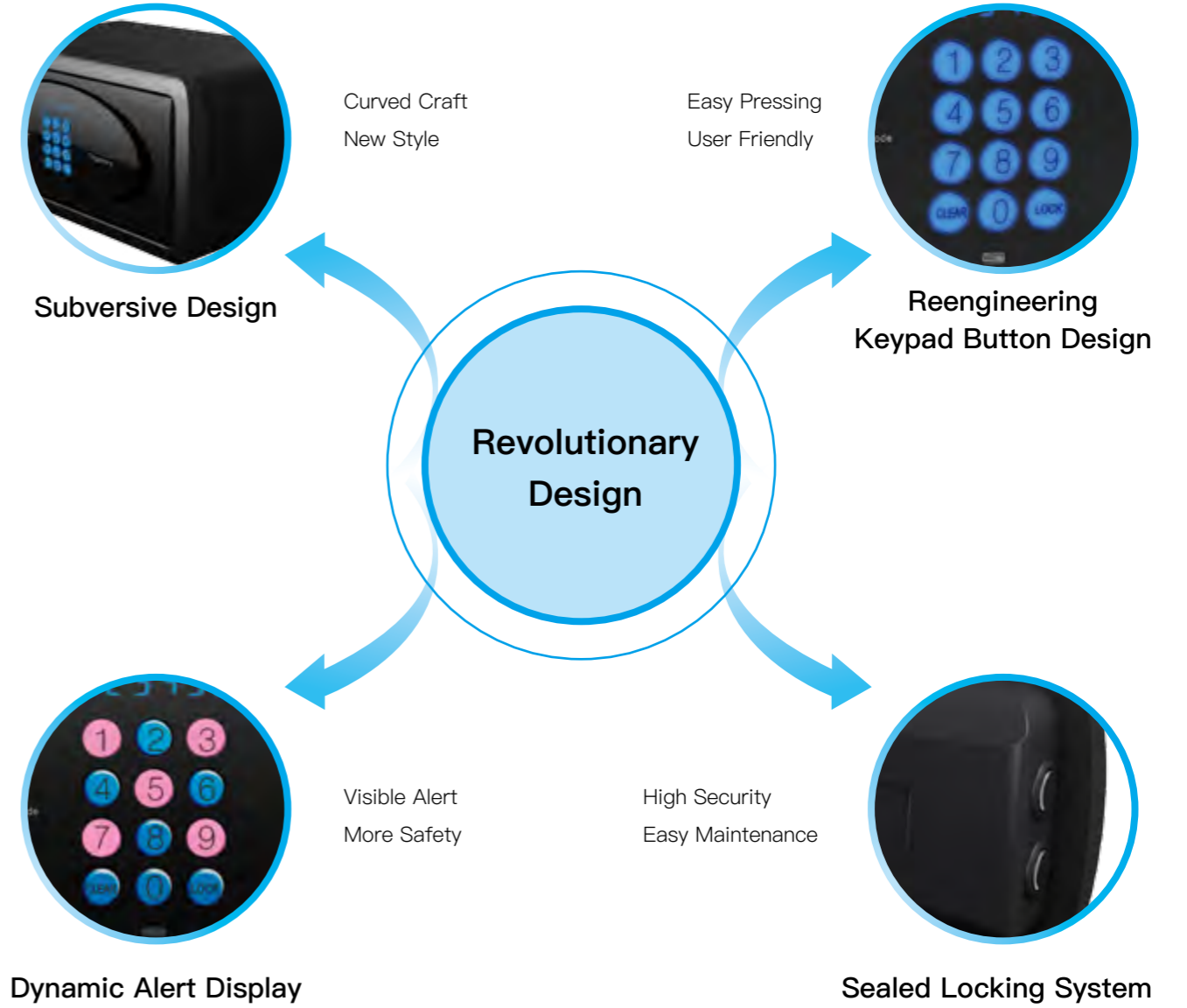
About Us

As a professional manufacturer, TIGOREX stands by a philosophy that includes the commitment, responsibility and long-term relationships. TIGOREX delivers the quality products which are engineered with safety, durability, functionality and attractive appearance, and is always improving the quality and excellence with a dedication technological advancement and innovation.

We strive to be a leading manufacturer and solution innovator with leadership in quality and value for money. We regard to the customers, quality, talents and prudence in the core values practicing our entrepreneurial principles.

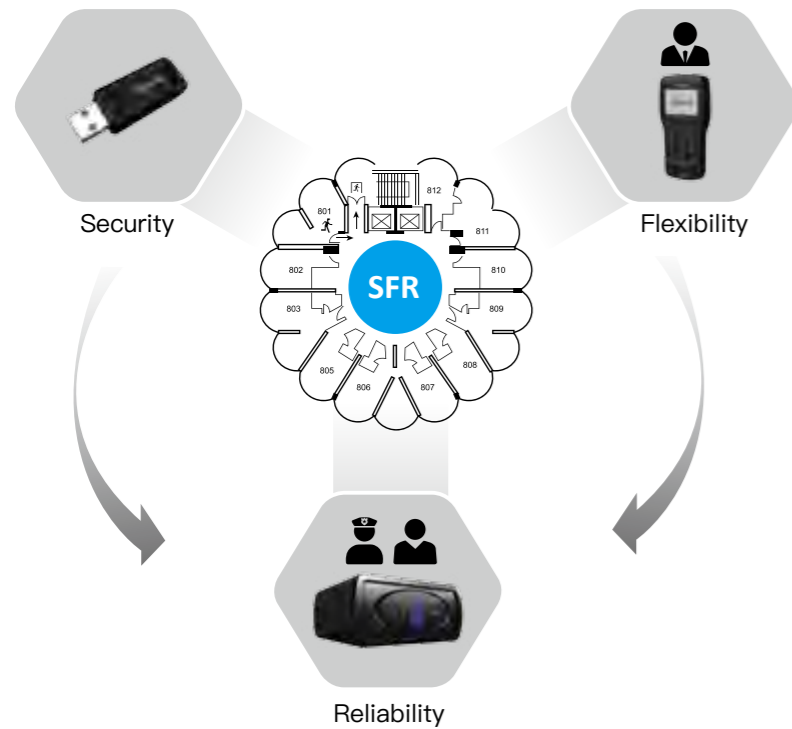


Tigorex



Tigorex

SFR Solution



Tigorex has developed an SFR solution includes

- Security
- Flexibility
- Reliability

The powerful functions can assist different hotels to set up a individual guest room safe management system which hotels can select different configurations according to your needs to fit in the safe



Service Control Guardian



Guardian



Guardian decoder is developed by our independently and protected by the utility model patent



Ekey

Security

Unique Ekey design and protected by the utility model patent

Flexibility

3 user levels are different authorized management

Reliability

2 + 2 override management

Guardian Product Features:

- SFR management system
- 1000 self audit events
- Battery indication
- Internal clock
- Sleep mode
- Change safe configuration
- 2/3 override methods
- 3 user administration levels
- Fingerprint model
- Download & read safe records
- USB comm. with Ekey and PC
- Data back-up
- Window base software



Product Features:

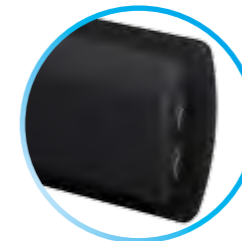
- No mechanical key and master code
- CE, RoHS certificate
- 1000 safe audit events
- Large 4/6 digits blue LED display
- φ13mm larger keypad button
- ADA compliant telephone keypad
- Audio feedback
- Illuminated blue keypad
- Dynamic alert display
- Low battery indicator
- Sleep mode
- Fast audit key
- Anti-tamper switch
- Internal light
- Inside carpet
- Powered supply with 5 LR6/AA
- ABS back cover
- Two extended solid steel bolts
- Sealed locking system
- Anti-drilling plate for locking system
- Easy battery replacement
- Replaceable door
- Accommodated different size laptop
- Compatible with Guardian and Ekey



Curved Body Design



Dynamic Alert Display



Sealed Locking System



No Mechanical Key and Master Code

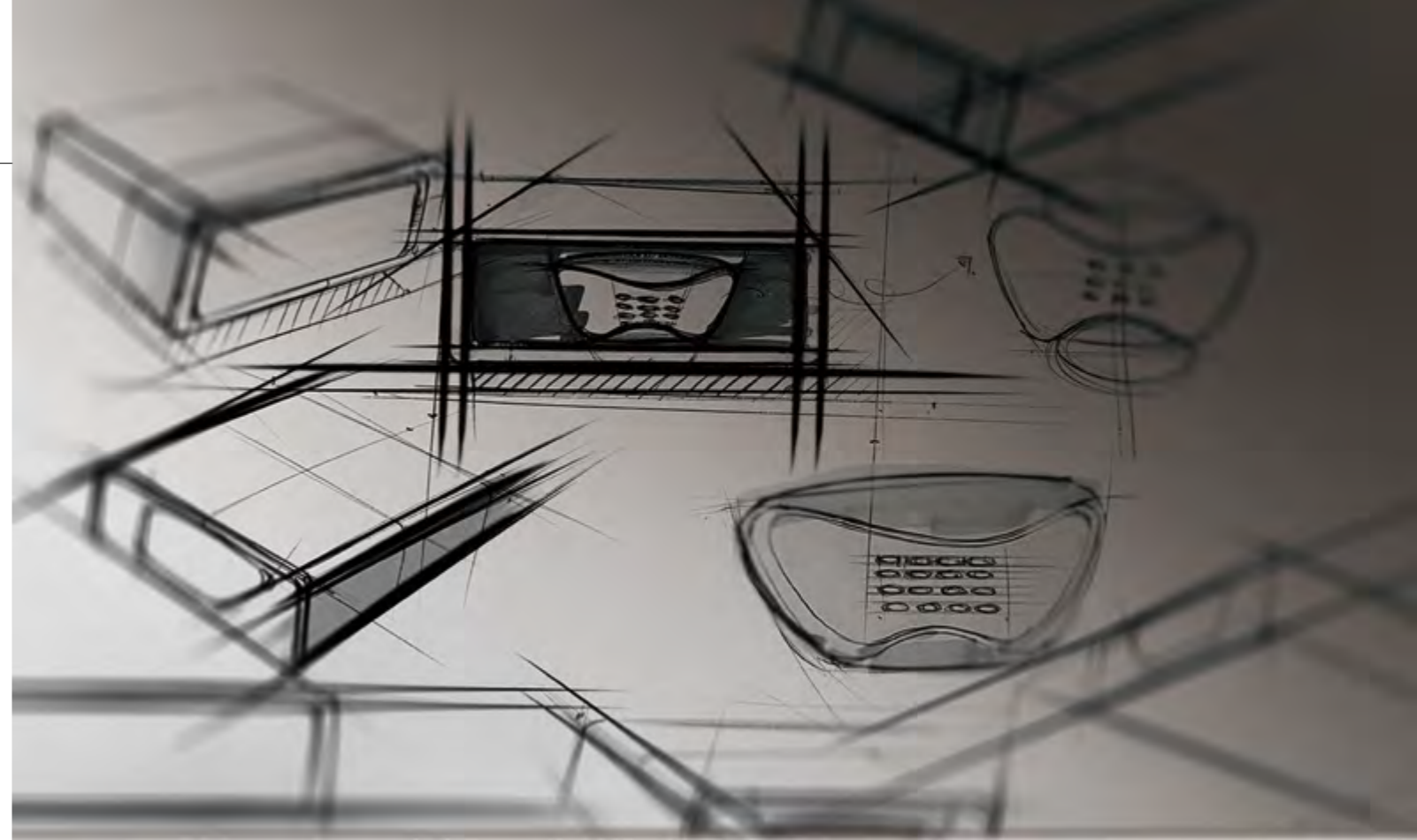
Alpha α Series	AO-C1	AO-C2	AO-C3
Laptop Size	12.9" iPad Pro	15" Laptop	17" Laptop
Body Size (mm)	202 / 432 / 270	202 / 432 / 420	202 / 432 / 490
External Size (mm)	202 / 432 / 270	202 / 432 / 420	202 / 432 / 490

Tigorex



Product Features:

- No mechanical key and master code
- CE, RoHS certificate
- 1000 safe audit events
- Large 4/6 digits blue LED display
- 15mm width curved keypad button
- ADA compliant telephone keypad
- Audio feedback
- Illuminated blue keypad
- Dynamic alert display
- Low battery indicator
- Sleep mode
- Fast audit key
- Anti-tamper switch
- Internal light
- Inside carpet
- Powered supply with 5 LR6/AA
- ABS back cover
- Two extended solid steel bolts
- Sealed locking system
- Anti-drilling plate for locking system
- Easy battery replacement
- Replaceable door
- Accommodated different size laptop
- Compatible with Guardian and Ekey



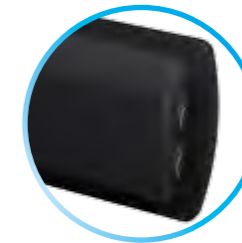
Spirit SP Series	SP-P1	SP-P2	SP-P3
Laptop Size	12.9" iPad Pro	15" Laptop	17" Laptop
Body Size (mm)	202 / 420 / 250	202 / 420 / 400	202 / 420 / 470
External Size (mm)	202 / 420 / 267	202 / 420 / 417	202 / 420 / 487



Curved Frame Design



Dynamic Alert Display



Sealed Locking System



No Mechanical Key and Master Code

Tigorex

Safe Box

Eternity ET Series



Product Features:

- No mechanical key and master code
- CE, RoHS certificate
- 500 safe audit events
- Large 4/6 digits red LED display
- 15mm width curved keypad button
- ADA compliant telephone keypad
- Audio feedback
- Illuminated yellow keypad
- Low battery indicator
- Sleep mode
- Fast audit key
- Anti-tamper switch
- Internal light
- Inside carpet
- Powered supply with 5 LR6/AA
- ABS back cover
- Two extended solid steel bolts
- Sealed locking system
- Anti-drilling plate for locking system
- Easy battery replacement
- Replaceable door
- Accommodated different size laptop
- Compatible with Guardian and Ekey



Floor Safe
ET-F1



Wall Safe
ET-W1



Medium Safe
ET-M1

Eternity ET Series	ET-L1	ET-L2	ET-L3
Laptop Size	12.9" iPad Pro	15" Laptop	17" Laptop
Body Size (mm)	200 / 385 / 260	200 / 430 / 370	200 / 490 / 370
External Size (mm)	200 / 385 / 279	200 / 430 / 389	200 / 490 / 389

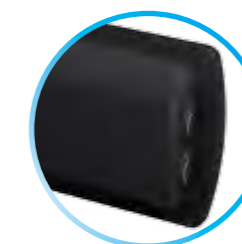
Eternity ET Series	ET-M	ET-W	ET-F
Laptop Size	15" Laptop	17" Laptop	17" Laptop
Body Size (mm)	390 / 370 / 330	469 / 418 / 263	558 / 370 / 405
External Size (mm)	390 / 370 / 349	469 / 418 / 280	558 / 370 / 424



15mm width curved keypad



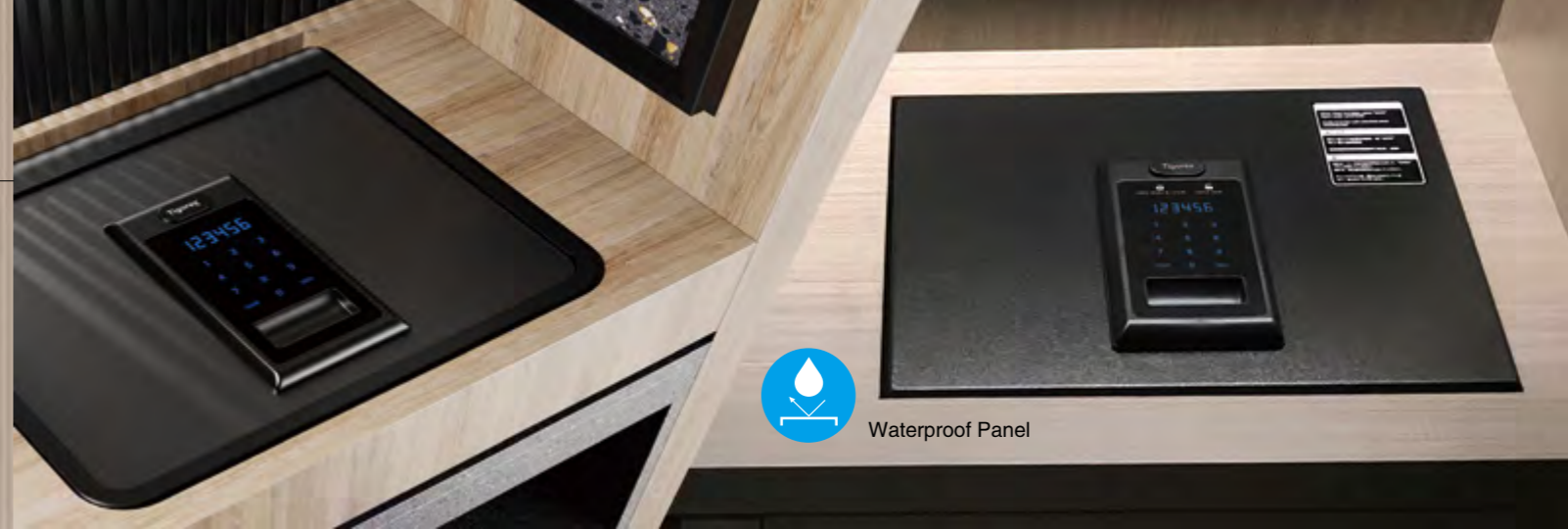
Internal light



Sealed Locking System



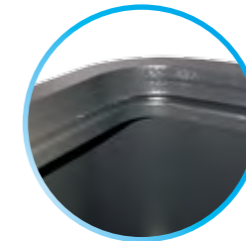
No Mechanical Key and Master Code



Waterproof Panel

Product Features:

- No mechanical key and master code
- CE, RoHS certificate
- 1000 safe audit events
- Large 4/6 digits blue LED display
- Waterproof panel
- Touch panel
- Audio feedback
- Illuminated blue keypad
- Dynamic alert display
- Low battery indicator
- Sleep mode
- Fast audit key
- 2 Pneumatic pistons
- Anti-tamper switch
- Internal light
- Inside carpet
- Powered supply with 5 LR6/AA
- ABS back cover
- Two extended solid steel bolts
- Sealed locking system
- Anti-drilling plate for locking system
- Easy battery replacement
- Replaceable door
- Accommodated different size laptop
- Compatible with Guardian and Ekey



Reinforced 12 mm rim design



Dynamic Alert Display



Sealed Locking System



No Mechanical Key and Master Code

Serenity SE Series	SE-FCT1	SE-FCT2	SE-CRT1
Laptop Size	15" Laptop	17" Laptop	15" Laptop
Body Size (mm)	125 / 400 / 350	134 / 460 / 350	125 / 400 / 350
External Size (mm)	142 / 400 / 350	151 / 460 / 350	138 / 400 / 350

Utility UT Series



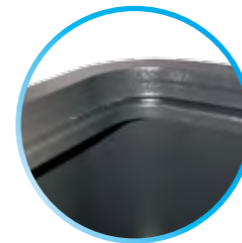
Curved Top Open

Full Cover Top Open

Utility UT Series	UT-FCT1	UT-FCT2	UT-CRT1
Laptop Size	15" Laptop	17" Laptop	15" Laptop
Body Size (mm)	125 / 400 / 350	134 / 460 / 350	125 / 400 / 350
External Size (mm)	142 / 400 / 350	151 / 460 / 350	138 / 400 / 350

Product Features:

- No mechanical key and master code
- CE, RoHS certificate
- 1000 safe audit events
- Large 4/6 digits red LED display
- 15mm width curved keypad button
- ADA compliant telephone keypad
- Audio feedback
- Illuminated yellow keypad
- Dynamic Alert Display
- Low battery indicator
- Sleep mode
- Fast audit key
- 2 Pneumatic pistons
- Anti-tamper switch
- Internal light
- Inside carpet
- Powered supply with 5 LR6/AA
- ABS back cover
- Two extended solid steel bolts
- Sealed locking system
- Anti-drilling plate for locking system
- Easy battery replacement
- Replaceable door
- Accommodated different size laptop
- Compatible with Guardian and Ekey



Reinforced 12 mm rim design



Dynamic Alert Display



Sealed Locking System



No Mechanical Key and Master Code

Technical Specification Overview (The technical data may have a little deviation, caused by the irresistible factors)

Alpha α / Spirit		AO-C1	AO-C2	AO-C3	SP-P1	SP-P2	SP-P3
Laptop size		12.9" iPad Pro	15" Laptop	17" Laptop	12.9" iPad Pro	15" Laptop	17" Laptop
Door opening		Right / Left	Right / Left	Right / Left	Right / Left	Right / Left	Right / Left
Body size	mm	202 / 432 / 270	202 / 432 / 420	202 / 432 / 490	202 / 420 / 250	202 / 420 / 400	202 / 420 / 470
	in	7.95 / 17.01 / 10.63	7.95 / 17.01 / 16.54	7.95 / 17.01 / 19.29	7.95 / 16.54 / 9.84	7.95 / 16.54 / 15.75	7.95 / 16.54 / 18.50
External size		mm	202 / 432 / 270	202 / 432 / 420	202 / 432 / 490	202 / 420 / 267	202 / 420 / 487
H x W x D		in	7.95 / 17.01 / 10.63	7.95 / 17.01 / 16.54	7.95 / 17.01 / 19.29	7.95 / 16.54 / 10.51	7.95 / 16.54 / 16.42
Internal size		mm	198 / 382 / 198	198 / 382 / 348	198 / 382 / 418	194.5 / 412.5 / 187	194.5 / 412.5 / 337
H x W x D		in	7.80 / 15.04 / 7.80	7.80 / 15.04 / 13.70	7.80 / 15.04 / 16.46	7.66 / 16.24 / 7.36	7.66 / 16.24 / 13.27
Door size		mm	157.5 / 398.5	157.5 / 398.5	157.5 / 398.5	156 / 382	156 / 382
H x W		in	6.20 / 15.69	6.20 / 15.69	6.20 / 15.69	6.14 / 15.04	6.14 / 15.04
Interior volume		litres	16.55	28.95	34.76	15.00	27.04
		cu ft	0.58	1.02	1.23	0.53	0.95
Weight		kg	10.6	13.4	14.7	10.00	12.80
		lb	23.37	29.54	32.41	22.05	28.22

Eternity		ET-L1	ET-L2	ET-L3	ET-M	ET-W	ET-F
Laptop size		12.9" iPad Pro	15" Laptop	17" Laptop	15" Laptop	17" Laptop	17" Laptop
Door opening		Right / Left	Right / Left	Right / Left	Right / Left	Right / Left	Right / Left
Body size	mm	200 / 385 / 260	200 / 430 / 370	200 / 490 / 370	390 / 370 / 330	469 / 418 / 263	558 / 370 / 405
	in	7.87 / 15.16 / 10.24	7.87 / 16.93 / 14.57	7.87 / 19.29 / 14.57	15.35 / 14.57 / 12.99	18.46 / 16.46 / 10.35	21.97 / 14.57 / 15.94
External size		mm	200 / 385 / 279	200 / 430 / 389	200 / 490 / 389	390 / 370 / 349	469 / 418 / 280
H x W x D		in	7.87 / 15.16 / 10.98	7.87 / 16.92 / 15.31	7.87 / 19.29 / 15.31	15.35 / 14.57 / 13.74	18.46 / 16.46 / 11.02
Internal size		mm	196 / 381 / 198	196 / 426 / 308	196 / 486 / 308	386 / 366 / 268	388 / 338 / 202
H x W x D		in	7.72 / 15 / 7.80	7.72 / 16.77 / 12.13	7.72 / 19.13 / 12.13	15.20 / 14.41 / 10.55	15.28 / 13.31 / 7.95
Door size		mm	152.5 / 350	152.5 / 395	152.5 / 455	342 / 335	385 / 328
H x W		in	6.00 / 13.78	6.00 / 15.55	6.00 / 17.91	13.46 / 13.19	15.16 / 12.91
Interior volume		litres	14.79	25.72	29.34	37.86	26.49
		cu ft	0.52	0.91	1.04	1.34	0.94
Weight		kg	9.3	12	13.2	15.30	17.8
		lb	20.50	26.46	29.10	33.73	39.24

Serenity / Utility		SE-FCT1	SE-FCT2	SE-CRT1	UT-FCT1	UT-FCT2	UT-CRT1
Laptop size		15" Laptop	17" Laptop	15" Laptop	15" Laptop	17" Laptop	15" Laptop
Door opening		Full Cover Top Open	Full Cover Top Open	Curved Top Open	Full Cover Top Open	Full Cover Top Open	Curved Top Open
Body size	mm	125 / 400 / 350	134 / 460 / 350	125 / 400 / 350	125 / 400 / 350	134 / 460 / 350	125 / 400 / 350
	in	4.92 / 15.75 / 13.78	5.28 / 18.11 / 13.78	4.92 / 15.75 / 13.78	4.92 / 15.75 / 13.78	5.28 / 18.11 / 13.78	4.92 / 15.75 / 13.78
External size		mm	142 / 400 / 350	151 / 460 / 350	138 / 400 / 350	142 / 400 / 350	151 / 460 / 350
H x W x D		in	5.59 / 15.75 / 13.78	5.94 / 18.11 / 13.78	5.43 / 15.75 / 13.78	5.59 / 15.75 / 13.78	5.94 / 18.11 / 13.78
Internal size		mm	73 / 396 / 346	82 / 456 / 346	67 / 396 / 346	73 / 396 / 346	82 / 456 / 346
H x W x D		in	2.87 / 15.59 / 13.62	3.23 / 17.95 / 13.62	2.64 / 15.59 / 13.62	2.87 / 15.59 / 13.62	3.23 / 17.95 / 13.62
Door size		mm	400 / 346	460 / 346	372 / 305	400 / 346	460 / 346
H x W		in	15.75 / 13.62	18.11 / 13.62	14.65 / 12.01	15.75 / 13.62	18.11 / 13.62
Interior volume		litres	14.00	17.00	13.00	14.00	17.00
		cu ft	0.49	0.60	0.46	0.49	0.60
Weight		kg	9.60	11.50	11.20	9.60	11.50
		lb	21.16	25.35	24.69	21.16	25.35

Safe Features Overview

Features:	Alpha	Spirit	Eternity	Serenity	Utility
Large 4/6 digits LED display	Blue	Blue	Red	Blue	Red
ø13 mm larger keypad button	Yes	-	-	-	-
15 mm width curved keypad button	-	Yes	Yes	-	Yes
ADA compliant telephone keypad	Yes	Yes	Yes	-	Yes
Waterproof cover	-	-	-	Yes	-
Touch panel	-	-	-	Yes	-
Audio feedback	Yes	Yes	Yes	Yes	Yes
Illuminated keypad	Blue	Blue	Yellow	Blue	Yellow
Dynamic indicator	Yes	Yes	-	Yes	Yes
Low battery indicator	Yes	Yes	Yes	Yes	Yes
Sleep mode	Yes	Yes	Yes	Yes	Yes
Fast audit key	Yes	Yes	Yes	Yes	Yes
Two pneumatic pistons	-	-	-	Yes	Yes
Safe audit events	1000	1000	500	1000	1000
Anti-tamper	Yes	Yes	Yes	Yes	Yes
Internal light	Yes	Yes	Yes	Yes	Yes
Inside carpet	Yes	Yes	Yes	Yes	Yes
Powered supply	5 LR6/AA	5 LR6/AA	5 LR6/AA	5 LR6/AA	5 LR6/AA
ABS back cover	Yes	Yes	Yes	Yes	Yes
Two extended solid steel bolts	Yes	Yes	Yes	Yes	Yes
Easy battery replacement	Yes	Yes	Yes	Yes	Yes
Replaceable door	Yes	Yes	Yes	Yes	Yes
Compatible with Guardian and Ekey	Yes	Yes	Yes	Yes	Yes
Options					
Spring loaded door	Yes	Yes	Yes	-	-
AC power input	Yes	Yes	Yes	Yes	Yes
Internal universal power outlet	Yes	Yes	Yes	Yes	Yes
Customize designated carpet	Yes	Yes	Yes	Yes	Yes

Tigorex



Tigorex® GUEST ROOM MINIBAR

Tigorex



XC-25AA Foam Door



XC-25AB Foam Door



XC-25AC Mirror Glass Foam Door



XC-25BA Glass Door



XC-25BB Glass Door



XC-25BC Glass Door

25L Foam Door Features

- Absorption refrigeration system
- C5H10 foam door
- Silent Noise 0 dB
- Automatic defrosting system
- Efficiency aluminum evaporator plate
- Internal LED light
- Included 1 glass tray
- Variable door hinge
- Magnetic door seals
- RoHS certificate standard
- Lock (Optional)

Technical Data

- Volume: 25L
- Color: Black
- Operation temperature: 4-12°C
- Rated power: 65W
- Energy consumption: 0.85kWh/24h
- Voltage/Frequency: AC220/60Hz
- Dimensions: 380D*400W*480H mm
- Net Weight: 12.8KG

25L Glass Door Features

- Absorption refrigeration system
- Transparent glass door
- Silent noise 0 dB
- Automatic defrosting system
- Efficiency aluminum evaporator plate
- Internal LED light
- Included 1 glass tray
- Variable door hinge
- Magnetic door seals
- RoHS certificate standard
- Lock (Optional)

Technical Data

- Volume: 25L
- Color: Black
- Operation temperature: 4-12°C
- Rated Power: 65W
- Energy consumption: 1kWh/24h
- Voltage/Frequency: AC220/60Hz
- Dimensions: 375D*400W*480H mm
- Net Weight: 14.5KG



30L SERIES



XC-30AA Foam Door



XC-30AB Foam Door



XC-30AC Mirror Glass Foam Door



XC-30BA Glass Door



XC-30BB Glass Door



XC-30BC Glass Door



30L Foam Door Features

- Absorption refrigeration system
- C5H10 foam door
- Silent noise 0 dB
- Automatic defrosting system
- Efficiency aluminum evaporator plate
- Internal LED light
- Included 1 glass tray
- Variable door hinge
- Magnetic door seals
- RoHS certificate standard
- Lock (Optional)

Technical Data

- Volume: 30L
- Color: Black
- Operation temperature: 4-12°C
- Rated power: 65W
- Energy consumption: 0.85kWh/24h
- Voltage/Frequency: AC220/60Hz
- Dimensions: 420D*400W*480H mm
- Net Weight: 13.2KG

30L Glass Door Features

- Absorption refrigeration system
- Transparent glass door
- Silent noise 0 dB
- Automatic defrosting system
- Efficiency aluminum evaporator plate
- Internal LED light
- Included 1 glass tray
- Variable door hinge
- Magnetic door seals
- RoHS certificate standard
- Lock (Optional)

Technical Data

- Volume: 30L
- Color: Black
- Operation temperature: 4-12°C
- Rated power: 65W
- Energy consumption: 1kWh/24h
- Voltage/Frequency: AC220/60Hz
- Dimensions: 415D*400W*480H mm
- Net Weight: 15.2KG



XC-40AA Foam Door



XC-40AB Foam Door



XC-40AC Mirror Glass Foam Door



40L SERIES

40L Foam Door Features

- Absorption refrigeration system
- C5H10 foam door
- Silent noise 0 dB
- Automatic defrosting system
- Efficiency aluminum evaporator plate
- Internal LED light
- Included 2 glass trays
- Variable door hinge
- Magnetic door seals
- RoHS certificate standard
- Lock (Optional)

Technical Data

- Volume: 40L
- Color: Black
- Operation temperature: 4-12°C
- Rated power: 65W
- Energy consumption: 0.85kWh/24h
- Voltage/Frequency: AC220/60Hz
- Dimensions: 440D*400W*550H mm
- Net weight: 14.8KG

40L Glass Door Features

- Absorption refrigeration system
- Transparent glass door
- Silent noise 0 dB
- Automatic defrosting system
- Efficiency aluminum evaporator plate
- Internal LED light
- Included 2 glass trays
- Variable door hinge
- Magnetic door seals
- RoHS certificate standard
- Lock (Optional)

Technical Data

- Volume: 40L
- Color: Black
- Operation temperature: 4-12°C
- Rated power: 65W
- Energy consumption: 1kWh/24h
- Voltage/Frequency: AC220/60Hz
- Dimensions: 435D*400W*550H mm
- Net weight: 17.0KG



XC-40BA Glass Door



XC-40BB Glass Door



XC-40BC Glass Door



60L SERIES

60L Foam Door Features

- Absorption refrigeration system
- C5H10 foam door
- Silent noise 0 dB
- Automatic defrosting system
- Efficiency aluminum evaporator plate
- Internal LED light
- Included 2 glass trays
- Variable door hinge
- Magnetic door seals
- RoHS certificate standard
- Lock (Optional)

Technical Data

- Volume: 60L
- Color: Black
- Operation temperature: 4–12°C
- Rated power: 80W
- Energy consumption: 1kWh/24h
- Voltage/Frequency: AC220/60Hz
- Dimensions: 500D*485W*560H mm
- Net Weight: 18.5KG



XC-60A Foam Door

60L Glass Door Features

- Absorption refrigeration system
- Transparent glass door
- Silent noise 0 dB
- Automatic defrosting system
- Efficiency aluminum evaporator plate
- Internal LED light
- Included 2 glass trays
- Variable door hinge
- Magnetic door seals
- RoHS certificate standard
- Lock (Optional)

Technical Data

- Volume: 60L
- Color: Black
- Operation temperature: 4–12°C
- Rated power: 80W
- Energy consumption: 1.15kWh/24h
- Voltage/Frequency: AC220/60Hz
- Dimensions: 495D*485W*560H mm
- Net weight: 20.8KG



XC-60BA Glass Door



XC-60BB Glass Door



DRAWER SERIES

Drawer Foam Door Features

- Absorption refrigeration system
- C5H10 foam door
- Silent noise 0 dB
- Automatic defrosting system
- Efficiency aluminum evaporator plate
- Internal LED light
- High quality 304 S/S drawer slides
- Professional wooden wine rack
- Magnetic door seals
- RoHS certificate standard
- Lock (Optional)

Technical Data

- Volume: 50L
- Color: Black
- Operation temperature: 4-12°C
- Rated power: 80W
- Energy consumption: 1kWh/24h
- Voltage/Frequency: AC220/60Hz
- Dimensions: 510D*550W*430H mm
- Net Weight: 18.2KG



XC-50



Professional Wooden Wine Rack



High Quality 304 S/S Drawer Slides

FEATURES SUPPLEMENT



Door Tray



Tempered Glass Tray



Internal LED Light



Efficiency Aluminum Evaporator Plate



Defrosting Drop Tray



Magnetic Door Seals



Temperature Control



Door Lock

Tigorex

Poly Resin Lacquerware

Polyresin lacquerware is the most recent material to be used in hotel guest room accessories that provides the highest degree of luxury decoration. Our polyresin lacquerware is applied high pressure density technology and high glossy polishing which can reach Japanese quality, the advantages protect against sun, damp, spilled liquids and other substances less damage the lacquerware surface for a long-life product cycle.



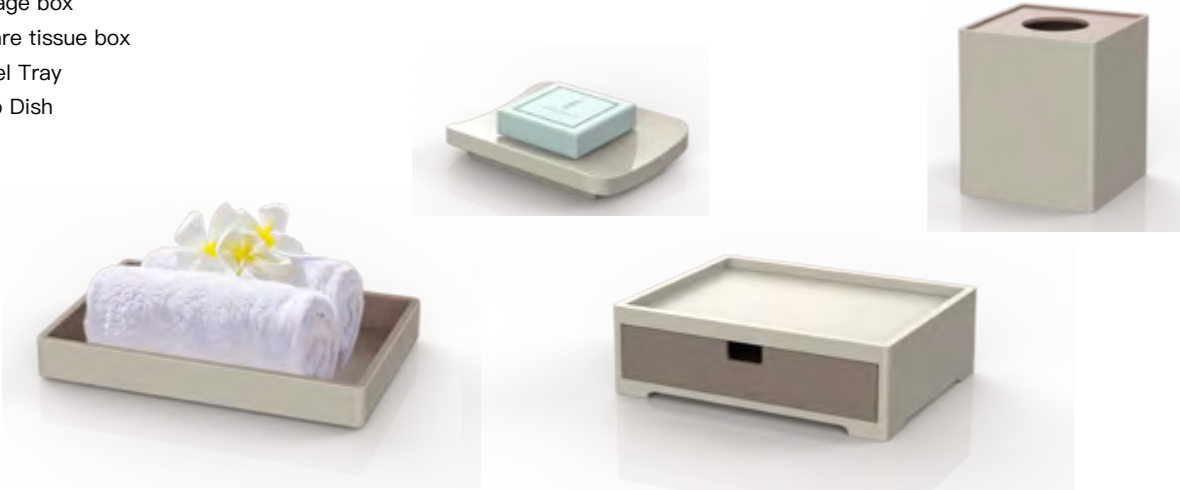
Guest Room Poly Resin Amenities

- 1. Molded with the material of ABS poly resin in one piece;
- 2. Orange matte finish and Classical gold.

Tigorex

Poly Resin Amenities

- Storage box
- Square tissue box
- Towel Tray
- Soap Dish



Gift Series



Tigorex



Serving Tray



Shoes Tray



Notepad



Service Guide Folder



Condiment Box



Remote Folder



Rectangular Tissue Box



Square Tissue Box



Npad-01/40
Notepad
130*190/40mm



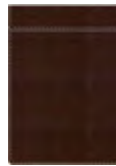
IBHolder-01
Ice bucket holder
160*160*145mm



AmBox-01
Amenity box 1 layer
255*225*70mm



RoWastebin-21
Round wastebin double layers
φ225*270mm



Npad-A4/50
A4 notepad
230*320/50mm



CoBox-01
Beverage box
150*80*55mm



AmBox-02
Amenity box 2 layers
255*225*135mm



Clock-01
Clock without light
132*120*50mm



CfCoaster-01
Conference coaster
230*125*14mm



CoBox-01B
Beverage box beveled
150*80*40/55mm



RoWastebin-01
Round wastebin
φ225*280mm



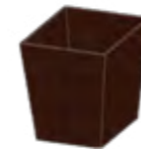
Clock-02L
Clock with light
100*125*45mm



DCCoaster-01
Double cups coaster
200*100*14mm



SGFolder-01
Service guide folder
230*320*30mm



SqWastebin-11
Square wastebin
200/250*200/250*320mm



IcBucket-01
Ice bucket
φ140*190mm



SGFolder-02C
Service guide folder with file clips
240*320*40mm



OvWastebin-21
Oval wastebin double layers
φ260*φ190*270mm



DoHanger-01
Door hanger
240*80 mm



StTray-01
Stationery tray
215*80*40mm



ReHolder-01A
Remote holder arc
80*75*165mm



SqTissuebox-01
Square tissue box
130*130*130mm



BiFolder-01
Bill folder
140*230*30mm



LLHolder-01
Laundry list holder
360*265mm



ReHolder-01
Remote holder level
80*75*165mm



BrStands-01
Brochure stands (S)
290*90*182 mm



DeBlotter-01/60
Desk blotter
450*350/60mm



PSBasket-01
Portable shoe basket
350*275*95mm



DRHolder-02A
Double remote holder arc
160*80*170 mm



BrStands-03
Brochure stands (L)
350*100*240 mm



SeTray-02
Service tray (M)
350*250*30mm



ShTray-01
Shoe tray
400*300*80mm



DRHolder-02
Double remote holder level
160*80*170mm



SeTray-03
Service tray (L)
400*280*30mm



ReFolder-01
Remote folder
90*220*40mm



ReTissuebox-01
Rectangular tissue box
240*120*65mm

Tigorex

Capsule Coffee Machine



Tigorex

Capsule Coffee Machine



White



Blue



Matt Black

Product Features

- 2 coffee levels touch
- Energy saving sleep mode
- NTC temperature control
- Removable water tank
- Removable capsule container & drip tray
- Foldable cup stand
- Storage 9–11 used capsules
- Capsule compatible with Nespresso size GS/LVD/CB/CE/EMC/ROHS/LFGB/ERP/CCC Standard

Product Specifications

- Product: Capsule Coffee Machine
- Model No.: KM-C0518
- Color: White / Blue / Matte Black
- Dimension: 332L x 116W x 220H mm
- Water Tank: 0.6L
- Voltage: 220V~
- Frequency: 50Hz
- Power: 1350W
- Pressure: 19 bars pump

Tigorex

Electric Kettle



Product Specifications

Product: Electric Kettle
Model No.: TX 3009
Color: Black/ Creamy White
Dimension:
209L x 154W x 174H mm
Capacity: 0.6L
Voltage: 220V~
Frequency: 50Hz
Power: 1200W

Product Features

SUS304 food grade stainless steel
Double layer body for heating insulation
One piece inner S/S container
Power switch light
High quality STRIX thermostat control
Automatic boiling shut off
Dry boiled device protection
Concealed heating element for easy cleaning
Detachable 360° swivel base

Tigorex

Custom Made Color



Creamy White + Black



Tigorex

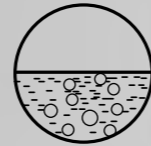
Elegant Style Kettle



Automatic boiling shut off



Dry boiled device protection



Detachable 360° swivel base



SUS304 food grade stainless steel



6711

Product Specifications

Product: Electric Kettle

Model No.: 6711

Color: Metallic Dark Blue

Dimension: 205L x 137W x 220H mm

Capacity: 1L

Voltage: 220V~

Frequency: 50Hz

Power: 1000W



6711P1

Product: Electric Kettle with tray

Model No.: 6711P1

Color: Metallic Dark Blue / Black

Dimension: 360L x 240W x 235H mm

Capacity: 1L

Voltage: 220V~

Frequency: 50Hz

Power: 1000W

Product Features

SUS304 food grade stainless steel

Double layer body for heating insulation

One piece inner S/S container

Power switch light

High quality thermostat control

Automatic boiling shut off

Dry boiled device protection

Concealed heating element for easy cleaning

Detachable 360° swivel base



Black



White



Gray

Product Specifications

Model No. FQ-233

Color: Black / White / Gray

Material: ABS

Tray: 379L x 260W x 10H mm

Beverage Box: 170L x 55W x 50H mm

Hair Dryer



● Space Grey



● Light Gold

Product Specifications

Model No. B11

Color: Space Grey / Light Gold

Dimension: 71L x 90W x 270H mm

Voltage: 220V~

Frequency: 50Hz

Power: 1600W

Product Features

Built in 110,000 RPM high-speed brushless motor

Intelligent NTC temperature control

Negative ions for hair caring

Magnetic suction nozzle

59 dB low noise technology

2 speed & 3 temperature settings

Hair Dryer



● Black



● Light Grey

Product Specifications

Model No. B616

Color: Black / Light Grey

Dimension: 173L x 68W x 238H mm

Voltage: 220V~

Frequency: 50Hz

Power: 1875W

Product Features

High-speed motor

Safety handle touch sensor

Foldable handle design

Negative ions for hair caring

Magnetic suction nozzle

Overheat automatic cut-off device

2 temperature settings

Hair Dryer



● Black



● Light Grey

Product Specifications

Model No. FB-629

Color: Black / Light Grey

Dimension: 165L x 68W x 195H mm

Voltage: 220V~

Frequency: 50Hz

Power: 1600W

Product Features

High-speed motor

Wall mounting

Overheat automatic cut-off device

3 temperature settings

Tigorex

Flashlight



Product Specifications

Product: Torch Light

Model No.: TX 9001

Color: Black / White

Switch: Magnetic induction

Output: 45 lm

Light Color: Daylight

Runtime: \geq 4 Hours

Power: 4 x AAA batteries (batteries included)

Installation: 3M tape/screw fixing

Dimensions: 41.8*47.8*147 mm

Five-in-one function: soap dispenser, mirror, clock, Thermometer, decoration

A series with different colors and installation methods allow to choose according to your environment.

Tigorex

Automatic Sanitizer Dispenser



Gel Outlet



Spray Outlet



Foam Outlet



12/24 Clock mode



Room temperature



USB power available



Batteries power available



5 adjustable levels



Refill liquid alert

Tigorex

Automatic Sanitizer Dispenser



NX Silver



NX Black



MS Black



MS Silver



ML Black



ML Silver

Product Specifications
Aluminum alloy design
LCD display black glass touch control
Temperature display
12/24 Hours clock
Infrared sensor technology
5 dispensing levels
Low power light indicator
Refill liquid alert
480 ml container
Powered supply with 4 x AA batteries
Induction distance 2-6 cm
Optional USB AC / DC adaptor

Dimensions:
NX Series
228H / 141W / 78D mm

MS Series
251H / 141W / 105D mm

ML Series
260H / 141W / 78D mm



Art Decorative Painting

Tigorex

The Art Decorative Painting

Painting Finishing
 Hand made painting
 Texture painting
 Crystal coating painting
 Metal craft

Painting Frame
 PU
 Solid wood
 Aluminum



The art decorative painting offers different finishing and frame suitable for living room, guest room, bedroom, corridor, function room and lobby rest area.



Tigorex



Tigorex





Hotelier Tips of Tea

To understand and reevaluate traveler's desires, IHG Hotels & Resorts' voco hotels conducted a recent global survey to uncover what consumers returning to travel really want from their hotel experience. The survey found that nine in 10 respondents rank great service as most important to them when staying at a hotel. But the new study also showed that travelers crave unexpected service offerings — and this is where tea comes in. Reported by worldteanews.com



"Essentially, approaching hotels as an independent tea rep is extremely tough, and this is why hotel experiences with tea are largely sub-optimal," reveals Amy Dubin, owner of Janam Tea and a speaker at the upcoming World Tea Conference + Expo. (Photo by: Ninelimages / BigStock.com)

Capsule Tea Machine



Product Specifications
 Product: Capsule Tea Machine
 Model No.: IST-101
 Color: White
 Voltage: 220V~
 Frequency: 50Hz
 Power: 1800W
 Dimension: 355L x 115W x 285H mm

Product Features
 Built-in WiFi to update the steeping tea program
 Intelligent tea identification system to adjust the steeping tea program
 Quick heating system, 30 seconds starting, 10 seconds steeping
 AI programed chip to adjust the steeping temperature
 100% ZHENG SHAN TANG original tea



Tigorex

Tea Capsule



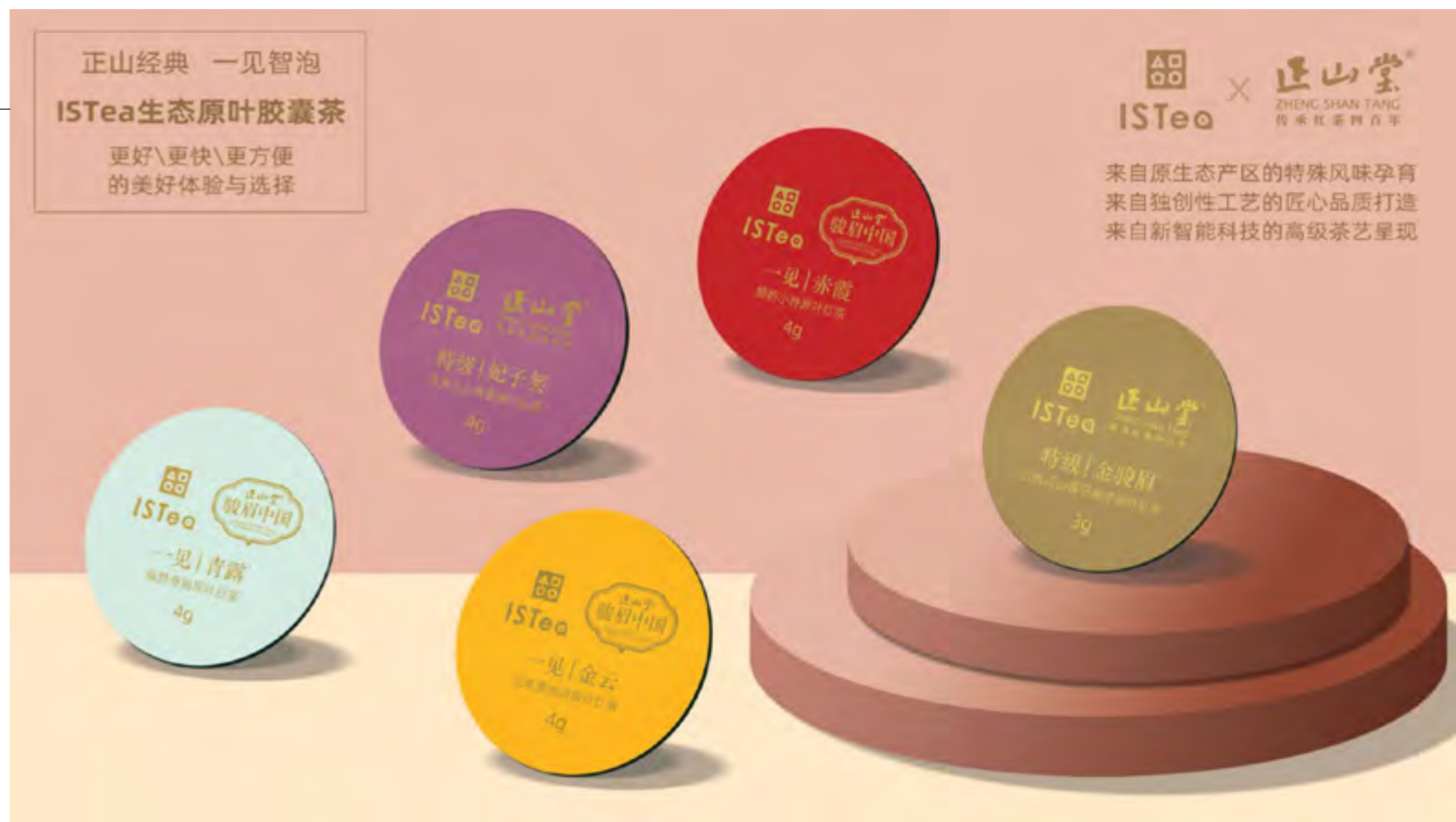
Convenience

Quick Starting

Health

Easy Cleaning

Professional Steeping



品鉴系列



乐享系列



Tigorex

Tea Capsule



正山堂®
ZHENG SHAN TANG
传承红茶四百年

Over 400 years experience
in the Chinese tea industry

ZHENG SHAN TANG JUNMEI CHINA

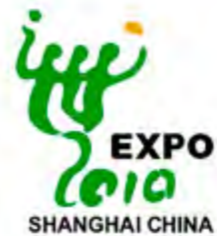


Tigorex

Organic Certifications

国际有机产品认证 绿色生态质量保证

- 中绿华夏有机产品认证
- 美国NOP有机食品认证
- 欧盟(德国)BCS有机食品认证
- 日本JAS有机产品认证



★★★★★
上海世博会
World Expo Shanghai China
名茶评优红茶类
金奖



★★★★★
中国(上海)国际茶业博览会
Tea Expo, Shanghai 2011
中国名茶评选
金奖



★★★★★
中国(广州)国际茶业博览会
Tea Expo, Guangzhou 2018
全国名优茶质量竞赛
特等金奖



★★★★★
世界茶业金奖赛
World Tea Championship 2019
红茶类
冠军



PASSION

NON VENDIAMO CAFFÈ
MA ESPERIENZE DI GUSTO
STRAORDINARIE

Tigorex®

Tigorex Hospitality Company Limited
Room C 06, 5/F Mai Wah Ind Bldg, No. 1-7 Wah Sing ST,
Kwai Chung, Hong Kong
Contact: Danny Chan
Mobile: +852 9213 8113 / + 86 158 1425 8113
Email: dannychan@tigorex.com

UPDATED CATALOGUE

ANGLO-EAST TRADING CO. (HK) LTD

ROOM 906, BLOCK B, PO LUNG CENTRE, 11 WANG CHIU ROAD,
KOWLOON BAY, KOWLOON, HONG KONG

英東貿易(香港)有限公司

香港九龍九龍灣宏照道11號寶隆中心B座906室

TEL: (852) 2375 1111 FAX: (852) 2375 3409
E-MAIL: SALES@ANGLO-EAST.HK

CONTACT US

The Most Welcome to Contact Us